

SCHEDULE

TUESDAY, NOVEMBER 19, 2019

7:30–8:00 AM	Registration and Continental Breakfast
8:00–8:45 AM	Environmental Exposures in Our Everyday Lives
8:45–9:30 AM	Health Implications of Food and Agriculture
9:45–10:45 AM	Incorporating Environmental Health into Home/Community Assessments
10:45–11:45 AM	Current Issues in Environmental Health (8 Stations) – Part 1
11:45–12:45 PM	Catered Lunch and Presentation: Climate Change and Health
12:45–1:30 PM	Environmental Health through the Lifespan
1:30–2:15 PM	The Role of Health Professionals in the Age of Climate Change
2:30–3:30 PM	Current Issues in Environmental Health (8 Stations) – Part 2
3:30–4:15 PM	Putting It All Together
4:15–4:30 PM	Evaluation



Additional program information is available on our website:

WWW.ANSELM.EDU/CNE

Saint Anselm College is an approved provider of continuing nursing education by the Northeast Multistate Division, an accredited approver by the American Nurses Credentialing Center's Commission on Accreditation.

Non-Profit Org.
US POSTAGE
PAID
Manchester, NH
Permit #6035

SAINT ANSELM
COLLEGE
1889

CONTINUING NURSING EDUCATION
100 Saint Anselm Drive
Manchester, NH 03102-1310

Change Service Requested



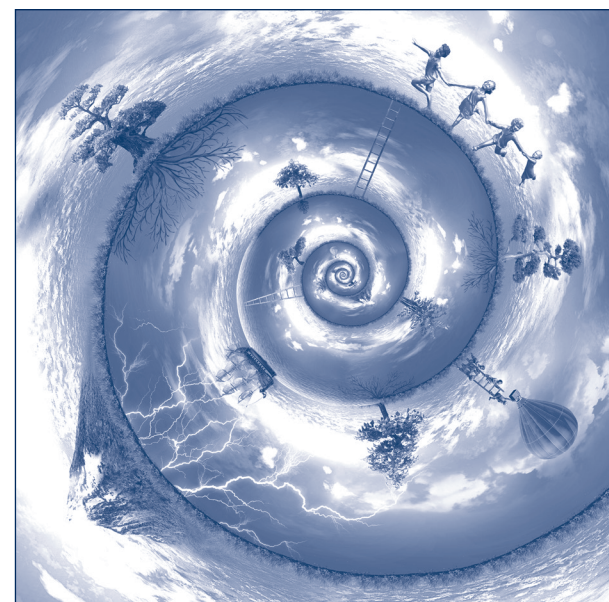
www.facebook.com/cne.saintanselm

visit us online:
www.anselm.edu/cne

ENVIRO 2019

Environmental Health Conference

Environment and Health: Exploring the Connections



Tuesday, November 19, 2019

Grappone Conference Center
70 Constitution Avenue, Concord, NH

Sponsored by:



SAINT ANSELM
COLLEGE

CONTINUING NURSING EDUCATION
Committed to Advancing the Practice of Nursing

DISTINGUISHED FACULTY

LOU BARINELLI, PHD, Director, Water Analysis Lab, Public Health Laboratory, Division of Public Health Services, NH Department of Health and Human Services

STEPHANIE CHALUPKA, EDD, RN, PHCNS-BC, FAAOHN, FNAP, Professor and Coordinator, Master of Science in Nursing Program, Department of Nursing, Worcester State University, Worcester, MA

GARY COHEN, BA, President, Health Care without Harm and Practice Greenhealth, Boston, MA

TANYA DUMONT, MS, Asthma Control Program Manager, Healthy Homes and Environment Section, Bureau of Public Health Protection, Division of Public Health Services, NH Department of Health and Human Services

GAIL GETTENS, MS, Health Promotion Adviser, Healthy Homes and Environment Section, Bureau of Public Health Protection, Division of Public Health Services, NH Department of Health and Human Services

KATRINA HANSEN, MPH, Chief, Infectious Disease Surveillance, Bureau of Infectious Disease Control, Division of Public Health Services, NH Department of Health and Human Services

KATHY MURPHY, EDD, MSN, RN, Professor of Nursing, Naugatuck Valley Community College, Waterbury, CT

BARBARA SATTLER, DRPH, RN, FAAN, Professor, Public Health Program, University of San Francisco

PAUL SUSCA, MS, Supervisor, Drinking Water and Groundwater Bureau, NH Department of Environmental Services

PLANNING COMMITTEE

AMY GUTHRIE, MS, RN, Director of Continuing Nursing Education, Saint Anselm College, Manchester, NH

KATHLEEN F. BUSH, PH.D., Program Manager for the Environmental Public Health Tracking Program, Bureau of Public Health Statistics and Informatics, Division of Public Health Services, New Hampshire Department of Health and Human Services

STEPHANIE CHALUPKA, EDD, RN, PHCNS-BC, FAAOHN, FNAP, Professor and Coordinator, Master of Science in Nursing Program, Department of Nursing, Worcester State University, Worcester, MA

GENERAL INFORMATION

TARGET AUDIENCE: This conference is ideal for nurses, other healthcare professionals, registered environmental health specialists, and others who practice in a variety of environmental health settings.

CONTACT HOURS: This conference provides 7.75 contact hours.

EARLY REGISTRATION DISCOUNT: In order to receive Early Registration Discount, payment in the form of a check, Visa or MasterCard must accompany registration form and be in our office by October 18, 2019.

CANCELLATION/REFUND POLICY: Registrants who are not able to attend or send a substitute can obtain a refund of registration fee, minus a \$40 processing fee. A written request must be received by November 5, 2019. REFUNDS WILL NOT BE ISSUED AFTER THIS DATE – NO EXCEPTIONS.

CONFIRMATIONS: Your confirmation will be emailed to you.

CONFERENCE HANDOUTS: A link will be emailed to all participants prior to the start of the conference.

TAPING IS NOT ALLOWED.

PROGRAM CHANGES AND CANCELLATIONS: We reserve the right to make changes in content or speakers, or to cancel the program if enrollment criteria are not met or when conditions beyond our control prevail.

FOR YOUR COMFORT, we recommend dressing in layers, as room temperatures vary.

QUESTIONS: contact 603-641-7086 or anselm.edu/cne.

DARLENE MORSE, MSN, RN, MED, CIC, Public Health Nurse Program Manager, Bureau of Infectious Disease Control, New Hampshire Division of Public Health Services, Department of Health and Human Services

KATHY MURPHY, EDD, MSN, RN, Professor of Nursing, Naugatuck Valley Community College, Waterbury, CT

MICHELE ROBERGE, Bureau Chief, Public Health Protection, Division of Public Health Services, NH Department of Health and Human Services

BARBARA SATTLER, DRPH, RN, FAAN, Professor, Public Health Program, University of San Francisco

REGISTRATION FORM

Environment & Health: Exploring the Connections

MAIL: Saint Anselm College
Continuing Ed #1745
100 Saint Anselm Drive
Manchester, NH 03102-1310

FAX: 603-641-7089
credit card required

ONLINE: www.anselm.edu/cne
credit card required

PHONE: 603-641-7086,
credit card required

PLEASE PRINT CLEARLY OR TYPE.

Name _____

Credentials _____

Home Address _____

City _____ State _____ Zip _____

Home Phone (_____) _____

Work Phone (_____) _____

Email _____
REQUIRED FOR CONFIRMATION

Employing Agency _____

Address _____

City _____ State _____ Zip _____

CONFERENCE FEES

Early until 10/18 Regular after 10/18

☐ Conference Fee \$189 \$215

Fee includes morning coffee, lunch, and breaks.

METHOD OF PAYMENT

☐ Check enclosed made payable to Saint Anselm College
in the amount of \$ _____

☐ I authorize the use of my credit card: ☐ VISA ☐ MasterCard

Account # _____ Exp _____

Amount Authorized: \$ _____ Date _____

Signature _____

WWW.ANSELM.EDU/CNE

Cut along here